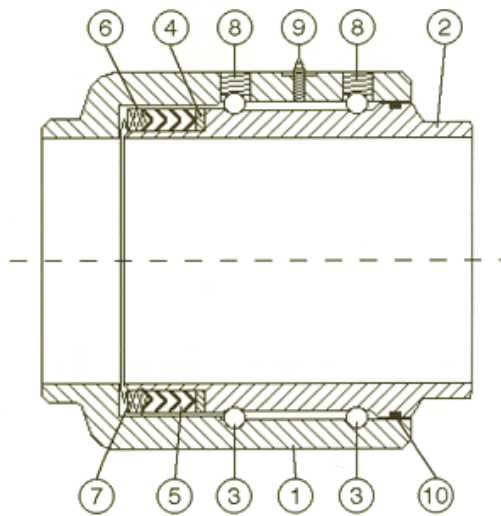


Swivel Joints

V-Ring Type

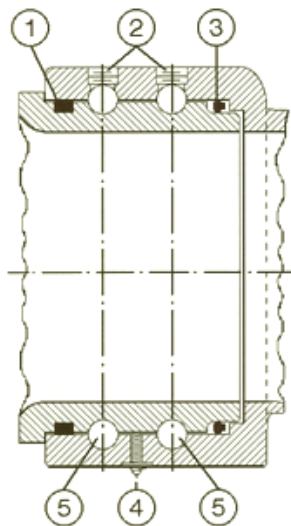


1. Body
2. Sleeve
3. Ball Bearing
4. Seal Retainer
5. V-Ring (Pressure) Seal
6. Spring Retainer
7. Spring
8. Ball Retainer
9. Grease Fitting
10. O-Ring (Dust) Seal

V-Ring Type available in Carbon Steel

Sizes from 1" – 8"
Pressures from 69 Bar

O-Ring Type



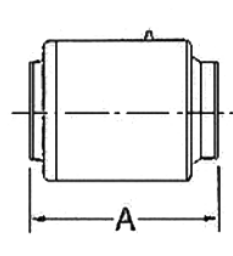
1. O-Ring (Dust) Seal
2. Ball Retainer Screw
3. O-Ring (Pressure) Seal
4. Grease Fitting
5. Ball Bearing

O-Ring Type available in Aluminium, Brass and Malleable Iron

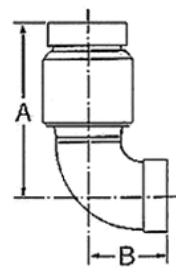
Sizes from 1" – 8"
Pressures from 69 Bar

Single Plane

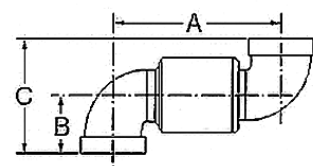
Style 20



Style 30

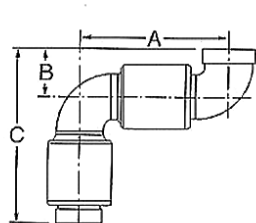


Style 40

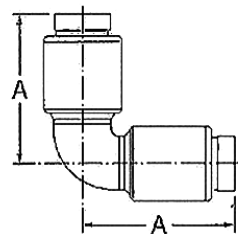


Double Plane

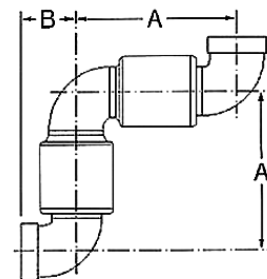
Style 50



Style 60



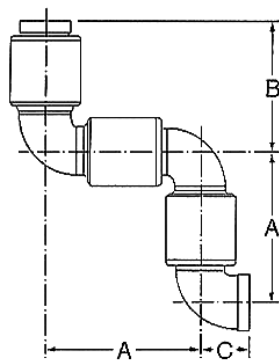
Style 70



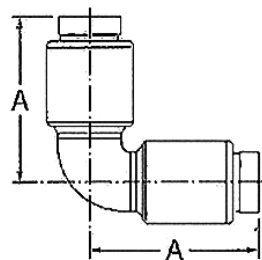
9

Triple Plane

Style 80



Style 60



Style 10

